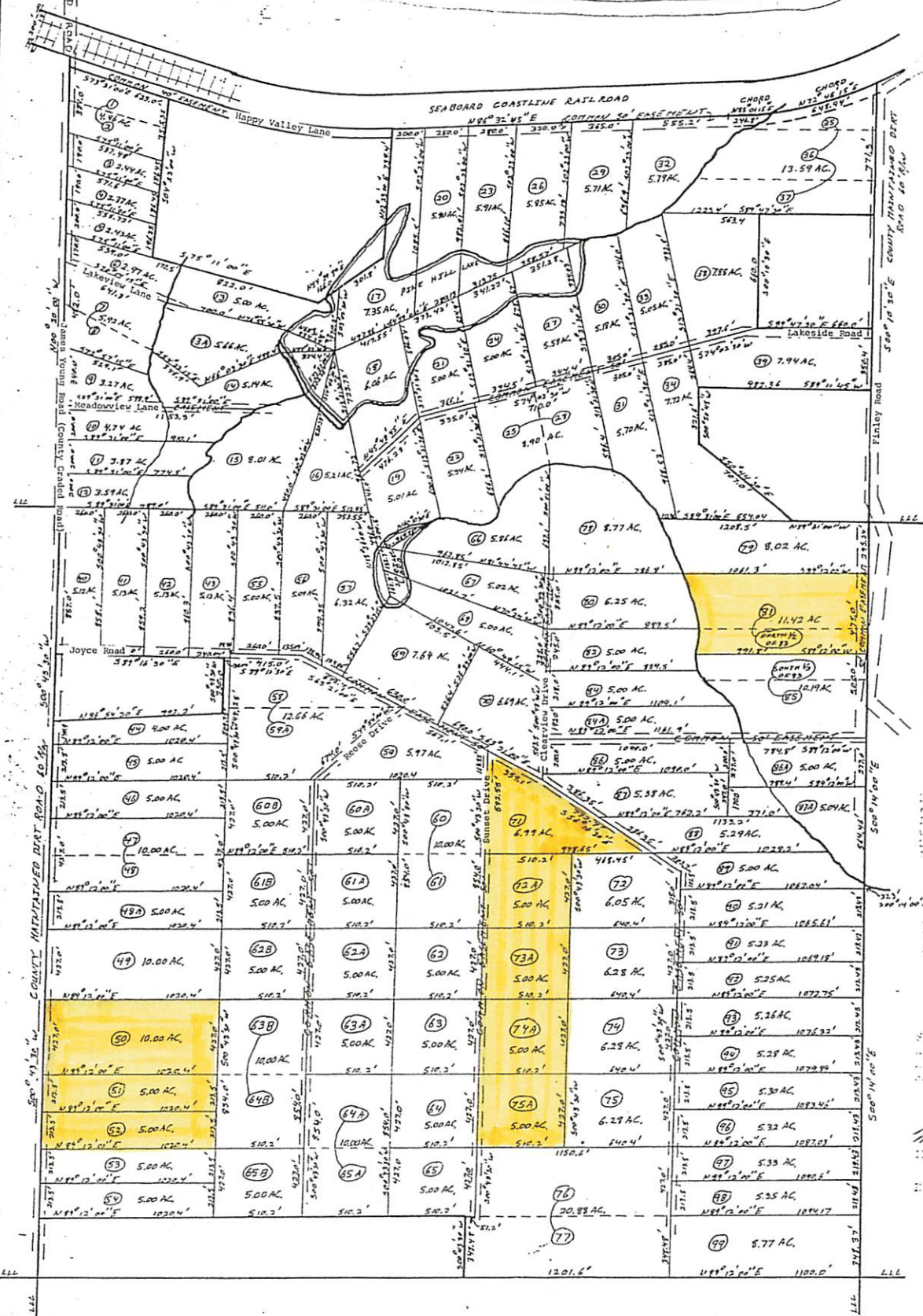
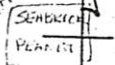


TO ALBANY ← HIGHWAY 82 → TO SYLVESTER

HIWY 82

# PINE HILL LAKES PLANTATION

Magnetic North



Boundaries Shown Herein Have  
 Been Calculated From Aerial  
 Photographs and the Bound Lines  
 Observed in the Field

ISSUED  
 THIS 10th Day of August  
 1967

IRON PINS WERE SET ON  
 ALL CORNERS WHERE POSSIBLE.  
 WHERE CORNERS ARE IN COMMON  
 EASEMENTS, PINS WERE SET ON  
 HARDEN AT EASEMENT, WHERE  
 LINES ENTERED THE LAKES,  
 PINS WERE SET ON LINE AT  
 THE EDGE OF THE LAKE.

In My Opinion This Plat is A Correct  
 Representation Of The Land  
 Contained Therein as Shown in  
 the Aerial Photographs and the  
 Bound Lines Observed in the  
 Field

This Survey Has Been Completed  
 In Accordance With The  
 Requirements of the  
 Georgia Code, Title 44,  
 Chapter 1, Section 1-10, O.C.G.A.

AMERICAN LAND INVESTMENT  
 TRUST  
 LOTS 363 & 374  
 7th DIST. WORTH COUNTY, GA.  
 6/27/1964

W. H. H. H. H.  
 Surveyor  
 1967

