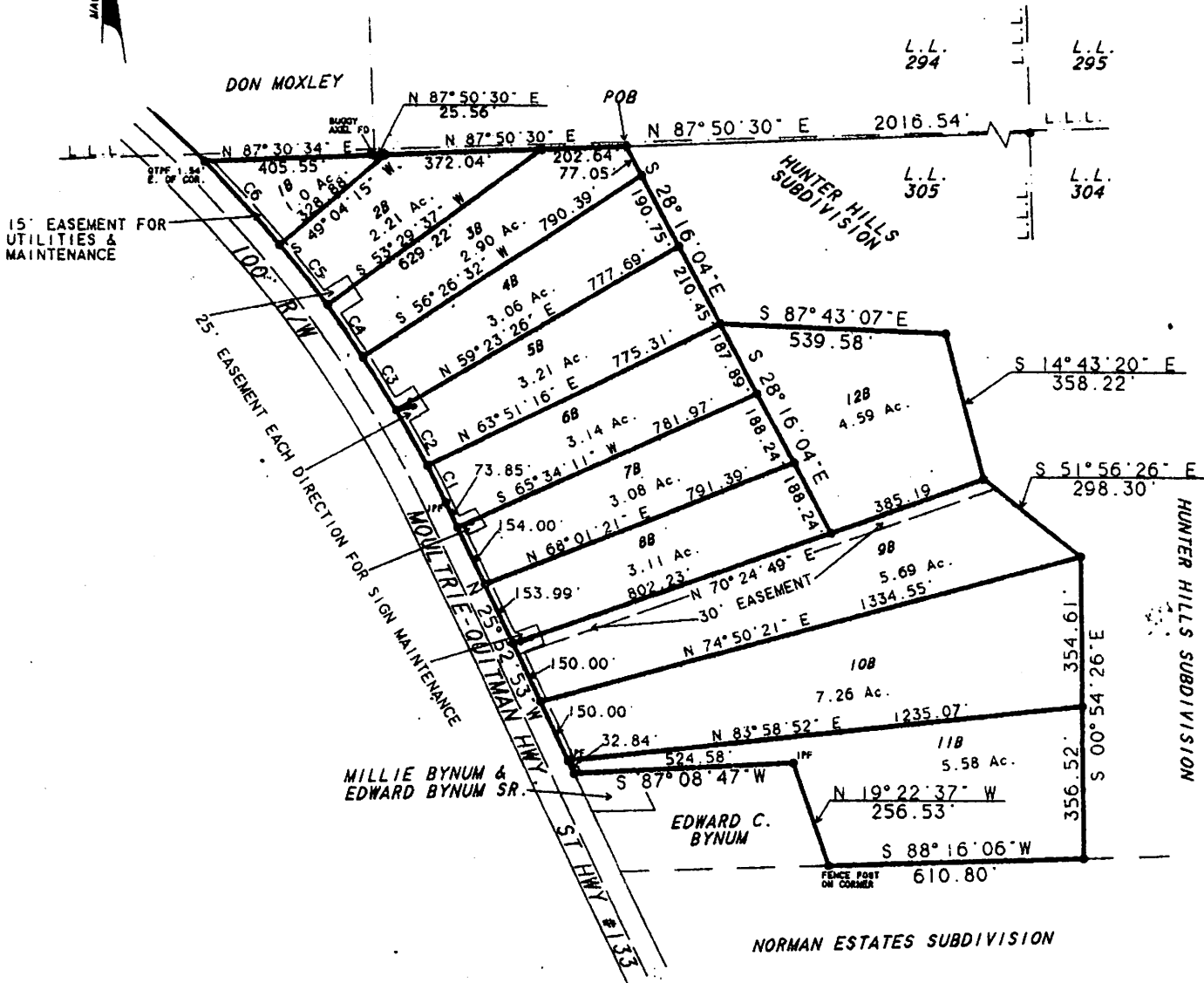


| | | | | |
|----|-----------------|--------|--------|---------|
| C4 | N 35° 01' 56" W | 149.98 | 150.00 | 2914.79 |
| C5 | N 38° 19' 17" W | 184.64 | 184.67 | 2914.79 |
| C6 | N 42° 46' 25" W | 268.21 | 268.30 | 2914.79 |



TOTAL 44.82 AC.

NOTES:

IRON PINS INDICATED AS SET (IPSI) ARE 1/2" RE-BAR 18" LONG

THE FIELD DATA UPON WHICH THIS MAP OR PLAT IS BASED HAS A CLOSURE PRECISION OF ONE FOOT IN 20045 FEET AND AN ANGULAR ERROR OF .03" PER ANGLE POINT

IN MY OPINION THIS PLAT REPRESENTS A TRUE AND ACCURATE SURVEY OF THE PROPERTY SHOWN AND HAS BEEN PREPARED IN CONFORMITY WITH MINIMUM STANDARDS AND REQUIREMENTS OF LAW.



JERRY S. LINDSEY
LAND SURVEYOR
GA. REG. # 2626

PROPERTY OF
ASHBEN BUSINESS PARK

IN L.L. 305, 8TH LAND DISTRICT
COLQUITT COUNTY GEORGIA

JERRY S. LINDSEY
LAND SURVEYORS

533 N. MAIN STREET PHONE 19121985-1731
MOLTRIE, GA. 31768 FAX (912)985-6988

DWG BY: SMR CHK BY: JSL

DATE: 5-12-00

SCALE: 1 INCH = 300 FEET

